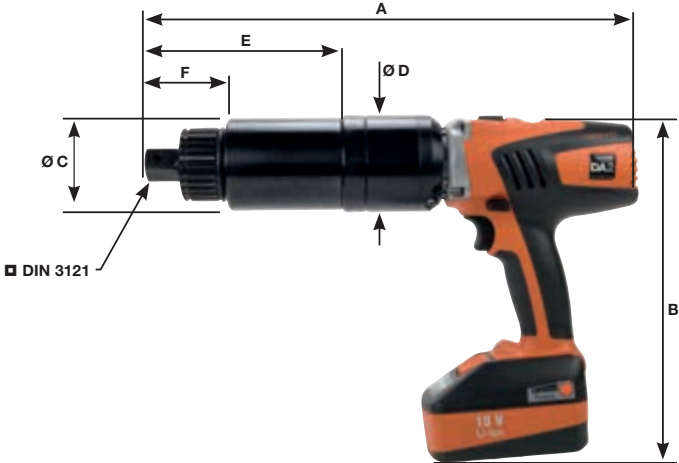


# Technical Data

## Battery capacity

Type	Number of tightenings*	Size of bolt	Torque (Nm)
DA2-05	748	M 24x95	420
DA2-10	385	M 27x95	670
DA2-20	220	M 27x95	1 400
DA2-30	110	M 36x95	2 100
DA2-36	104	M 36x95	2 300
DA2-48	88	M 52x95	3 600

\* Please note: The amount of bolt tightenings have been achieved via testing; the actual amount achievable will be proportional to the bolted joint being already pre-tightened or loose and the actual charge of the battery. Values have been achieved with a fully charged 6.0 Ah-battery.



## Models

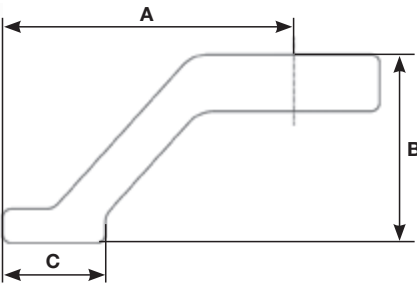
Type	Torque range (Nm)	RPM G 1	RPM G 2	RPM G 3	RPM G 4	A (mm)	B (mm)	Ø C (mm)	Ø D (mm)	E (mm)	F (mm)	■ = Drive	Weight <sup>2</sup> (kg)
DA2-05	130 - 550	8,4	16,6	37,0	71,6 <sup>1</sup>	365	245	68,5	72	144,5	60,5	¾"	5,35
DA2-10	180 - 1 000	5,3	10,8	24,5	48,0 <sup>1</sup>	365	245	68,5	72	144,5	60,5	¾"	5,35
DA2-20	220 - 2 000	3,0	5,6	12,7	24,6	405	245	80	72	140	61,5	1"	6,85
DA2-30	330 - 3 000	2,3	4,6	10,3	20,9	405	245	80	72	140	61,5	1"	6,85
DA2-36	380 - 3 600	1,8	3,3	7,8	15,3	405	245	80	72	140	61,5	1"	6,85
DA2-48	500 - 4 800	1,4	2,9	6,4	12,9	437	245	86	72	168	83,5	1½"	8,50

Repeat accuracy: ≤ 4%, dependent on the bolted joint. Regardless of the torque, the repeat accuracy depends on the individual bolted joint and therefore has to be determined for the specific bolting application.

<sup>1</sup> Attention – please observe: The 4th gear (highest speed gear) is not suited for controlled torque tightening.

<sup>2</sup> Weight without reaction arm and incl. battery pack.

## Standard reaction arms



Type	A (mm)	B (mm)	C (mm)	Weight (kg)
DA2-05	150	80	90	1,46
DA2-10	150	80	90	1,46
DA2-20	150	100	90	1,85
DA2-30	190	100	90	2,14
DA2-36	190	100	90	2,14
DA2-48	210	130	90	3,48