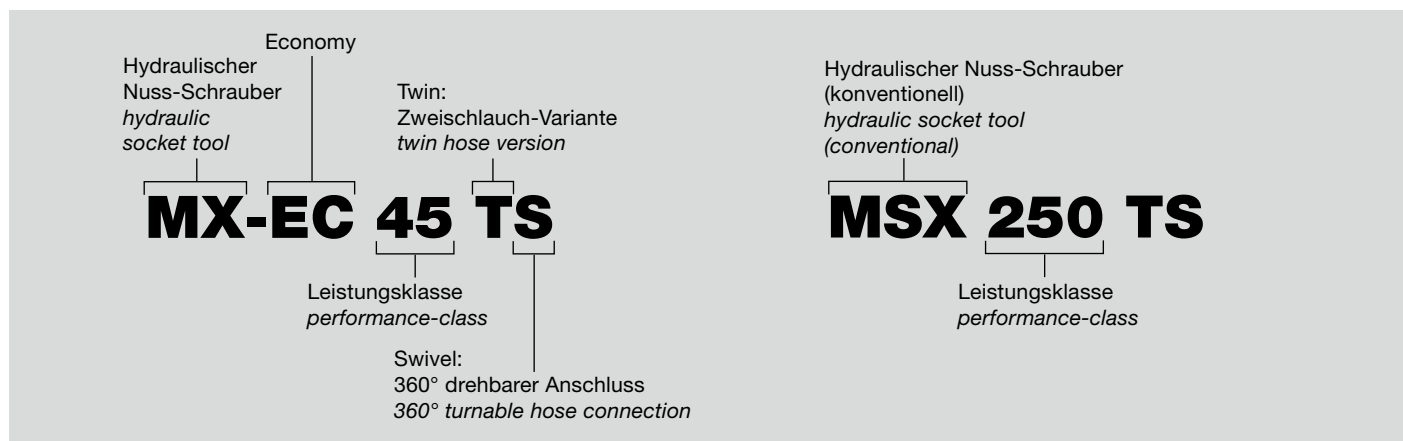
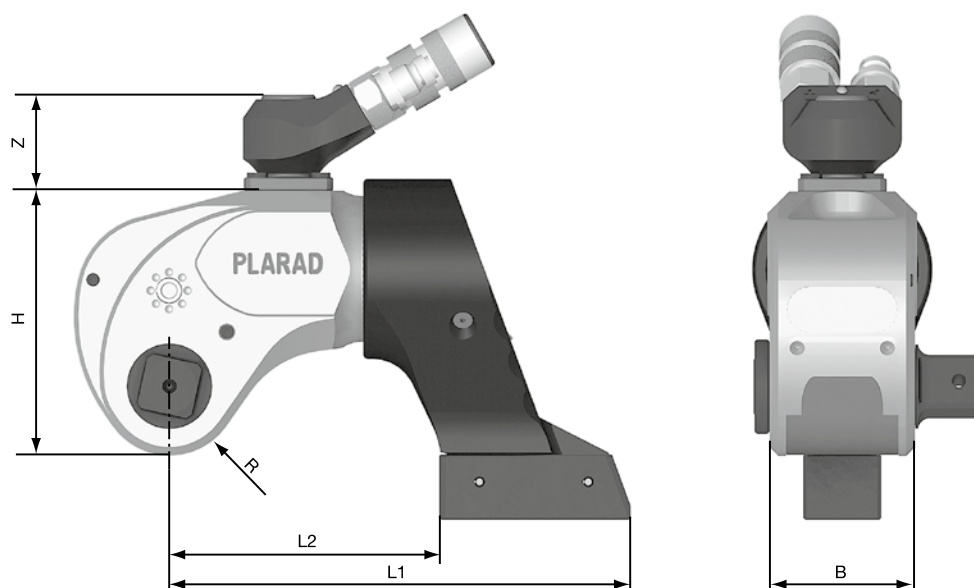


Hydraulische Drehmoment- schrauber MX-EC/MSX

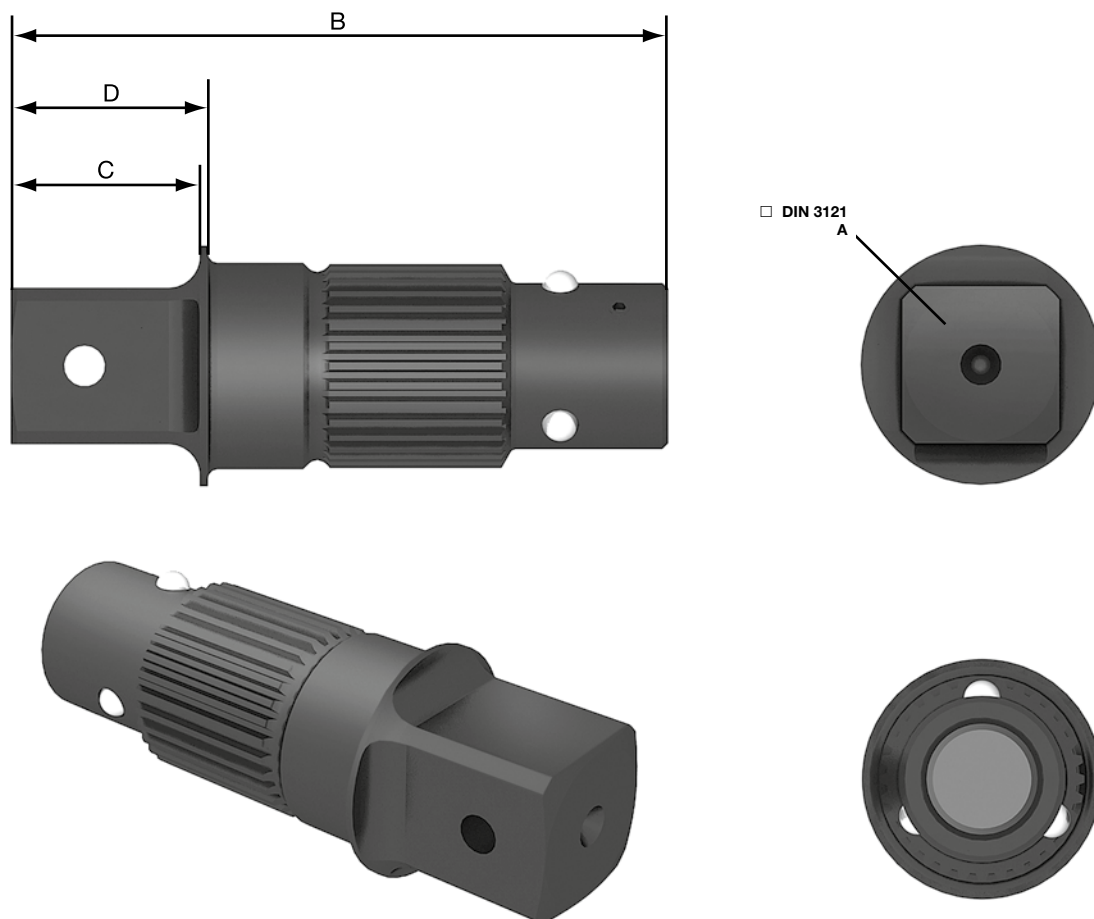
Hydraulic Torque Wrenches MX-EC/MSX



Geräte Tools



Typ Type	Antriebsvierkant Square drive	Leistungsbereich Performance range (Nm)	L2 - L1 (mm)	B (mm)	H (mm)	R (mm)	Z (mm)	Gewicht Weight (kg)
MX-EC 20 TS	1" (³ / ₄ ")	210 - 2.100	100 - 160	50	93,0	24,0	44,0	2,9
MX-EC 45 TS	1"	450 - 4.500	124 - 212	67	122,0	32,0	44,0	4,9
MX-EC 75 TS	1 1/2"	750 - 7.500	136 - 253	80	139,0	37,5	44,0	7,3
MX-EC 95 TS	1 1/2"	950 - 9.500	157 - 257	85	154,0	42,0	44,0	9,5
MX-EC 120 TS	1 1/2"	1.200 - 12.000	175 - 275	90	163,0	43,0	44,0	10,5
MX-EC 155 TS	1 1/2"	1.550 - 15.500	195 - 295	100	181,0	49,0	44,0	13,5
MX-EC 200 TS	2 1/2"	2.000 - 20.500	210 - 323	112	210,0	55,0	44,0	20,5
MSX 250 TS	2 1/2"	2.500 - 25.000	185 - 290	118	229,5	57,5	78,0	29,5
MSX 400 TS	2 1/2"	4.000 - 40.000	229 - 362	136	273,5	66,5	78,0	49,5
MSX 650 TS	3 1/2"	6.500 - 65.000	260 - 415	155	323,5	78,0	78,0	77,7



Vierkantadapter

Square drive adapters

Typ Type		Code Nr. Code no.	A ■	B (mm)	C (mm)	D (mm)	MT _{max} (Nm)	Gewicht Weight (kg)
MX-EC 20 TS	AP 075	B93-042-1-00002	3/4"	87,0	23	28	1.000	0,35
	AP 100	B93-042-1-00001	1"	91,0	27	32	2.100	0,45
MX-EC 45 TS	AP 100	B93-032-1-00001	1"	106,5	27	32	4.500	0,65
	AP 150	B93-032-1-00002	1 1/2"	119,5	40	45	4.500	0,95
MX-EC 75 TS	AP 150	B93-038-1-00005	1 1/2"	132,5	40	45	7.500	1,25
MX-EC 95 TS	AP 150	B93-041-1-00500	1 1/2"	136,5	41	44	9.500	1,23
MX-EC 120 TS	AP 150	B93-046-1-00081	1 1/2"	141,5	40	45	12.000	1,75
MX-EC 155 TS	AP 150	B93-048-1-00011	1 1/2"	156,5	40	45	15.500	2,10
	AP 250	B93-048-1-00019	2 1/2"	171,5	55	60	15.500	3,30
MX-EC 200 TS	AP 200	B93-058-1-00046	2 1/2"	189,5	55	60	20.000	4,75
MSX 250 TS	AP 250	B93-058-1-00001	2 1/2"	189,5	55	60	25.000	4,75
MSX 400 TS	AP 250	B93-068-1-00001	2 1/2"	208	55	60	40.000	6,20
MSX 650 TS	AP 250	F93-080-2-06405	2 1/2"	232	55	60	50.000	8,70
	AP 350	F93-080-2-08905	3 1/2"	262	85	90	65.000	12,00